



# POCKET BOOK

## Prevention and Management **Sexual Violence**

in the Environment of UPGRIS





---

## TABLE OF CONTENTS

---

<b>a. Prevention and Handling</b>	<b>1</b>
<b>Sexual Violence</b>	
<b>b. Objectives of Prevention and Handling</b>	<b>2</b>
<b>Sexual Violence</b>	
<b>c. Prevention and Handling Targets</b>	<b>3</b>
<b>Sexual Violence</b>	
<b>d. Scope of Prevention and</b>	<b>4</b>
<b>Management of Sexual Violence e. University</b>	
<b>Obligations</b>	<b>8</b>
<b>f. Rights and Responsibilities of Lecturers,</b>	<b>9</b>
<b>Educators, and Students</b>	
<b>g. Reporting Procedures</b>	<b>10</b>
<b>h. Handling Mechanism</b>	<b>11</b>
<b>I. Handling of Victims</b>	<b>12</b>
(1) <b>Support</b>	<b>13</b>
(2) <b>Protection</b>	<b>14</b>
(3) <b>imposition of administrative sanctions</b>	<b>15</b>
(3) <b>recovery</b>	<b>16</b>
<b>j. Victims' and Witnesses' Rights</b>	<b>18</b>
<b>k. Stages of Reporting Criminal Acts</b>	<b>19</b>

# Prevention and Handling of Sexual Violence

- Prevention refers to actions/methods/processes undertaken to prevent individuals or groups from committing sexual violence on campus.
- Sexual violence is any act that degrades, insults, harasses, attacks the body, and/or reproductive functions of a person, due to power imbalances and/or gender disparities, resulting in psychological and/or physical suffering, including impairing an individual's reproductive health and depriving them of the opportunity to pursue higher education safely and optimally.

# Objectives

## Prevention and Handling Sexual Violence

- - To assist in the prevention and management of sexual violence for
  - everyone in the campus environment.
- Explaining the reporting mechanism and victim support services in the event of cases of sexual violence occur within the campus environment.

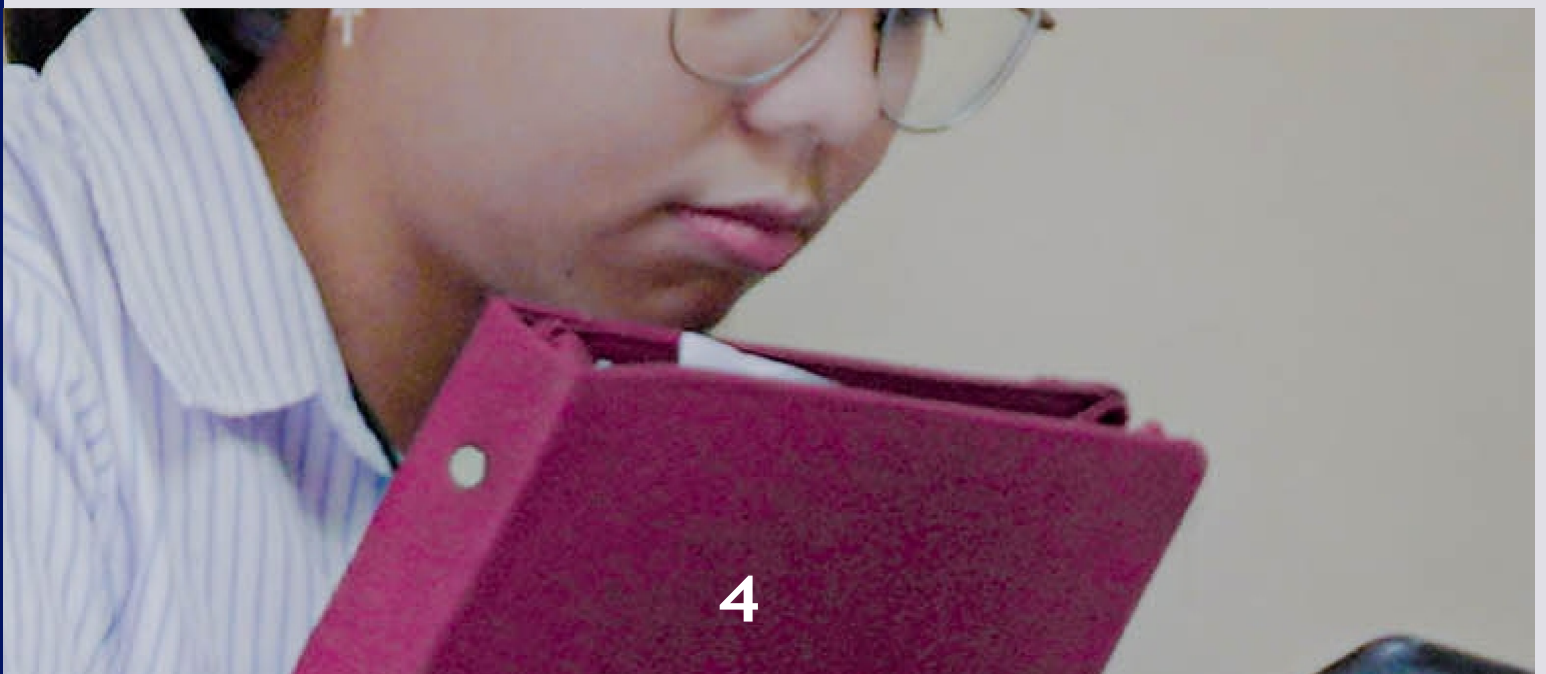
# Prevention and Handling of Sexual Violence

- Student
- Educators
- Educational Staff
- Campus Residents
- General Public who interact with students, educators, and educational staff in the implementation of Tridharma



# **“Sexual violence includes verbal, physical acts, or acts committed through information and communication technology”**

- **Comments that mock the physical appearance, body condition, and/or gender identity of the victim;**
- **Exposing one's genitals;**
- **Making remarks or sending messages containing sexual innuendo and/or whistling with sexual undertones;**
- **Staring with sexual undertones;**
- **Taking, recording, or distributing photos,**
- **audio and/or visual recordings of the victim with sexual undertones;**



A photograph showing a person's hand pressed against a white door. The person is wearing a blue and white striped shirt and a patterned blue and white scarf. The hand is pressed against the door, symbolizing sexual violence.

**“Sexual violence includes verbal, physical, or through information and communication technology”**

- Peeping on someone performing private activities in a private space; persuading,
- Promising, offering something, threatening the victim to engage in sexual transactions or sexual activity;



# **“Sexual violence includes verbal, physical, or through information and communication technology”**

- **Imposing punishments or sanctions with sexual undertones;**
- **Touching, rubbing, groping, holding, hugging, kissing, rubbing one's body against the victim's body;**
- **Removing the victim's clothing without their consent;**
- **Attempting rape;**
- **Forcing the victim to become pregnant or have an abortion;**
- **Allowing sexual violence to occur intentionally;**

**"Sexual violence causes harm physical, psychological, and social. The university provides counselling services to victims in accordance with the recommendations of the task force.**

# University Obligations

(1) Protecting the rights of all members of  
Victims of sexual violence.

(2) Protecting the safety of those  
involved in the issue  
(victims/witnesses).

(3) Facilitating actions to prevent  
sexual violence.

# Rights and Responsibilities Lecturers, Educators, and Students

- All members of the academic community contribute to the prevention of sexual violence by fostering a campus culture that is inclusive, respectful, ethical, and upholds fair treatment;
- If there is suspicion that a party who receive reports will experience conflicts of interest in the investigation and resolution of a sexual violence case, victims can request the University to appoint an authorised party to handle

*"Sexual violence causes physical, psychological and social harm physical, psychological and social harm, the University provides services to victims in accordance with the task force's recommendations"*

# Reporting Procedures


(1) Reporting is carried out by the victim  
/ reporting witnesses

(2) Reporting can be done via:

**Telephone, electronic short message,  
Email, Official university website**

(3) Reports are received for every  
victim's complaint

(4) The task force reports  
the follow-up action  
taken on the report to  
the Rector.

A person is holding a white rectangular sign with both hands. The sign has text on it. The top part of the sign says 'UPGRIS' in large, bold, blue capital letters. Below that, in smaller red capital letters, it says 'SAY NO TO SEXUAL HARASSMENT'. The person holding the sign is wearing a grey and white patterned top. The background is dark blue.

**UPGRIS**  
**SAY NO  
TO  
SEXU  
AL  
HARASSMENT**

# Handling Mechanism



- (1) The authorised institution in the process of handling sexual violence cases is the Task Force for the Prevention of Sexual Violence.
- (2) Perpetrators of sexual violence are punished based on reports from victims or whistleblowers.

# **Handling of Victims Through**

**a. counselling**

**b. protection**

**c. imposition**

**administrative sanctions**

**d. recovery**

---

# ASSISTANCE

- Support is provided to victims/witnesses who are students, educators, educational staff, and campus residents.
- Support takes the form of:
  - a. Counselling
  - b. Health Services
  - c. Legal Assistance
  - d. Advocacy and/or
  - e. Social and spiritual guidance
- Support in the form of counselling services for victims of sexual violence on campus through the Counselling and Psychological Services Centre (PBKLP)
- Legal assistance services for victims on campus through Legal Consultation Bureau Support is
- provided based on the consent of the victim or witness

# Protection

- **Provided to victims/witnesses who are students, educators, educational staff, and campus residents.**
- *guarantee of continuity to complete education for students; guarantee of*
- *continuity of employment as educators/educational staff;*
- *guarantee of protection from physical and non-physical threats from perpetrators/other parties and recurrence of sexual violence; protection of identity confidentiality;*

# Imposition of Administrative Sanctions

- Administrative sanctions are imposed if the perpetrator is proven to have committed sexual violence.
- The imposition of sanctions is determined by a decision of the Rector based on the recommendation of the Task Force.
- The imposition of administrative sanctions consists of:
  - a. minor administrative sanctions;
  - b. moderate administrative sanctions; or
  - c. severe administrative sanctions.



# Recovery

---

**(1) The Task Force facilitates recovery for victims.**

**(2) Forms of recovery facilitation include:**

- recovery of victims during the period determined by the Rector;**
- cooperation with relevant parties to provide recovery for victims;**
- monitoring the recovery process and the progress of the victim's condition, carried out through coordination with the victim recovery service provider.**

# Recovery

---

- **Notification to relevant parties at the university that:**

- 1. during the recovery period, victims who are students will not have their study period reduced or be considered on study leave;*
- 2. During the recovery period, victims who are educators or educational staff shall be entitled to rights in accordance with the provisions the applicable laws and regulations;*
- 3. victims who are students are entitled to receive additional academic guidance from educators;*

**(3) The provision of recovery assistance to victims is carried out with the victim's consent;**

# Victims' and Witnesses' Rights

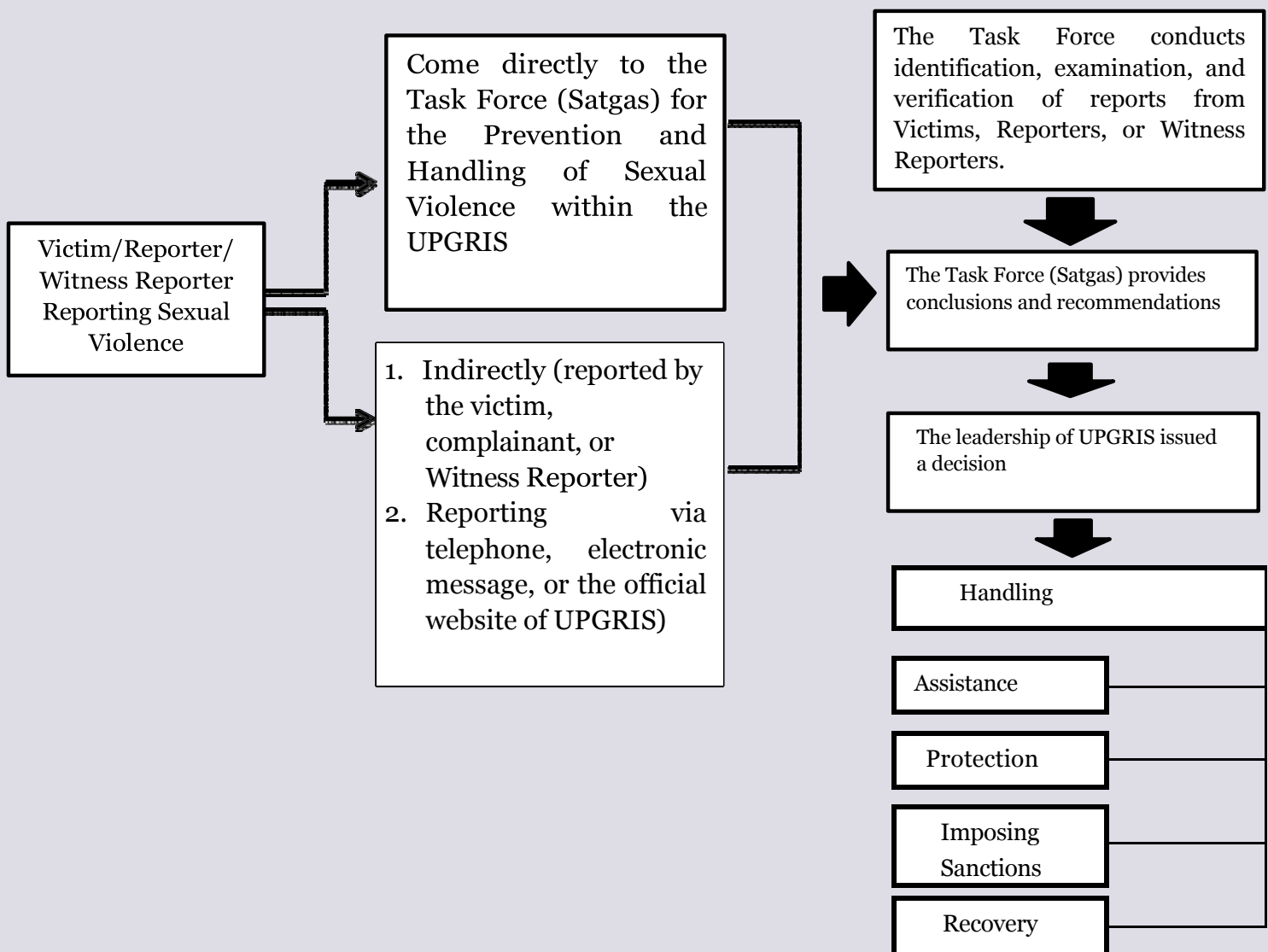
## **(1) Victims of sexual violence have the right to:**

- a. To have their identity kept confidential;
- b. Requesting assistance, protection, and/or recovery through the Task Force; and
- c. Requesting information on the progress of the handling of reports of sexual violence from the Task Force.

## **(2) Witnesses of sexual violence in higher education institutions have the right to:**

- a. assurance of confidentiality regarding their identity;
  - b. request assistance, protection and/or recovery
-

# Stages of Reporting Sexual Violence Crimes at PGRI University Semarang





# UPGRIS

## UNIVERSITAS PGRI SEMARANG

jl. Sidodai Timur. No. 24 - Dr. Cipto Semarang, telp. (024) 8316377 Fax. (024) 8448217



@humas\_upgris



@HumasUpgris



upgris@upgris.ac.id



Universitas PGRI Semarang



Universitas PGRI Semarang

[www.upgris.ac.id](http://www.upgris.ac.id)